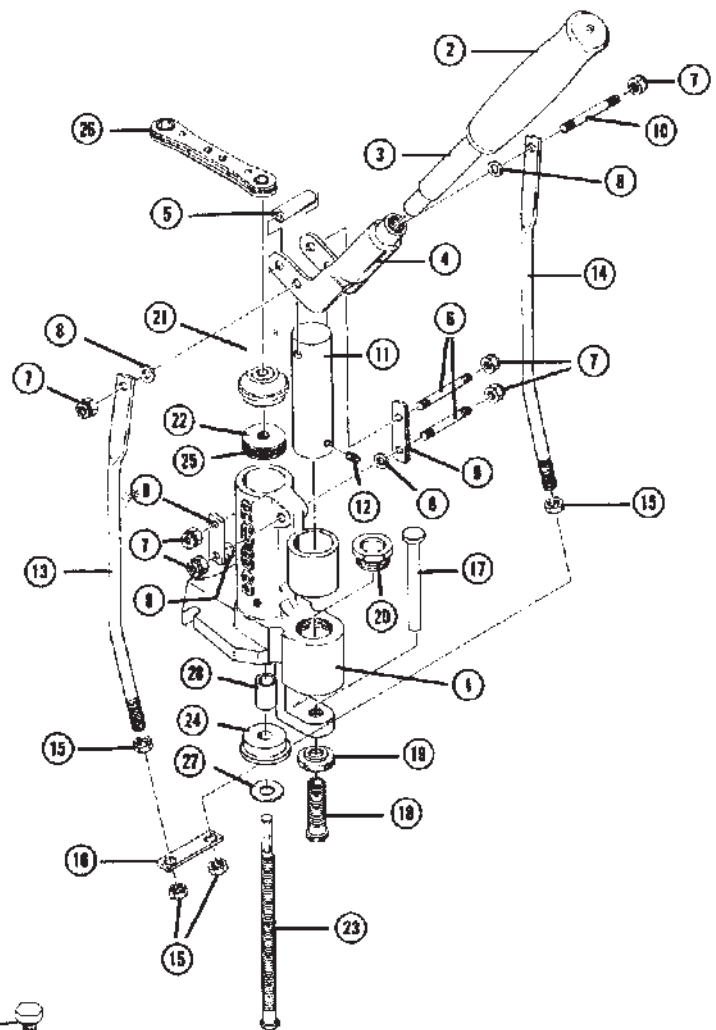




## 80060 LUBE-A-MATIC

Key	Part #	Description
1	◆	Main Body Casting
2	09264	Handle Grip
3	80064	Metal Handle
4	80067	Handle Yoke Assembly
5	80068	Handle Yoke Spacer
6	80070	Stud Bolt (2)
7	80071	Tri-Lock Nut, 1/4" x20 (6)
8	80072	Flat Washer, 1/4" (4)
9	80073	Handle Link (2)
10	80074	Stud Bolt
11	80077	Ram
12	09099	Setscrew, 10/32" x 1/4" CP
13	80079	Linkage arm, Left
14	80080	Linkage arm, Right
15	80081	Adjusting Nut (4)
16	80082	Bullet Ejection Plate
17	80085	Bullet Ejector Rod Assembly
18	80086	Bullet Ejector Adjustment Screw
19	80087	Bullet Ejector Lock Nut
20	80088	Die Locking Cap
21	80091	Reservoir Cap
22	80092	Lube Plunger
23	80093	Threaded Rod
24	80094	Base Plug
25	80095	"O" Ring Seal (2)
26	80097	Actuator Wrench
27	80098	Fibre Washer, 1/2"
28	80099	Die Locking Cap Wrench

*NOTE: This product has been discontinued and is no longer available. Some replacement parts are available. Call or write RCBS Customer Service for information.*



◆ Not Available Separately

## BULLET MOULD

Key	Part #	Description
1	81012	Sprue Cutter Stop Pin
2	81002	Locating Pin (2)
3	81010	Mould Attaching Pin/Screw Set (2)
4	81004	Setscrew, 10/32 x 3/16 CP
5	09410	Brass Buffer
6	81006	Sprue Cutter Retaining Bolt
7	81001	Belleville Spring
8	81013	Sprue Cutter, Single Cavity
8	81016	Sprue Cutter, 2 Cavity, Sm.
8	81018	Sprue Cutter, 2 Cavity, Lg.
9	◆	Mould Block (2)

◆ Not Available Separately

